

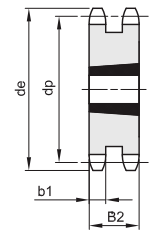
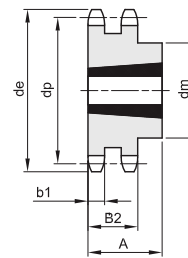
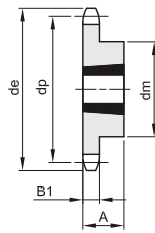
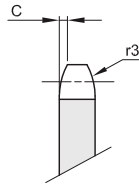
5/8" x 3/8"

15,875 x 9,65 mm

Rodillo 10,16 mm

10B - 1 - 2 - 3

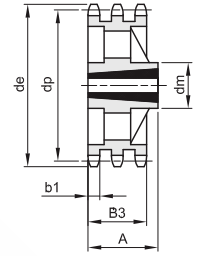
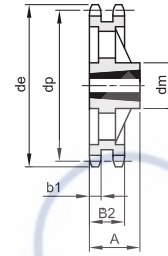
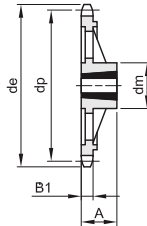
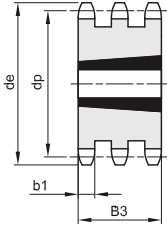
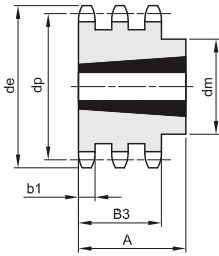
B1	B2	B3	b1	C	r3
9,1	25,5	42,1	9	1,6	16



1

2

3



4

5

6

7

8

Material acero C45 / *Material hierro fundido EN-GJL-200

Z	de	dp	simple				doble				triple							
			dm	A	Taper	Tipo	Kg.	dm	A	Taper	Tipo	Kg.	dm	A	Taper	Tipo	Kg.	
13	73,2	66,33	47	22	1008	1	0,23											
14	78,2	71,34	52	22	1108	1	0,27											
15	83,2	76,35	60	25	1210	1	0,30	25,5	1210	3	0,38	42,1	1215	5	0,63			
16	88,3	81,37	63	25	1210	1	0,38	25,5	1610	3	0,42							
17	93,3	86,39	71	25	1610	1	0,38	25,5	1610	3	0,47	42,1	1215	5	1,01			
18	98,3	91,42	71	25	1610	1	0,43	25,5	1610	3	0,60							
19	103,3	96,44	75	25	1610	1	0,54	25,5	1610	3	0,72	42,1	1615	5	1,19			
20	108,4	101,49	76	25	1610	1	0,61	25,5	1610	3	0,87							
21	113,4	106,51	76	25	1610	1	0,65	25,5	1610	3	1,01	42,1	1615	5	1,66			
22	118,4	111,55	76	25	1610	1	0,72	25,5	1610	3	1,18							
23	123,5	116,58	76	25	1610	1	0,77	25,5	1610	3	1,35	42,1	2012	5	1,78			
24	128,5	121,62	90	32	2012	1	0,98	90	32	2012	2	1,45						
25	133,6	126,66	90	32	2012	1	1,05	90	32	2012	2	1,55	105	44	2517	4	1,81	
26	138,6	131,70	90	32	2012	1	1,11	90	32	2012	2	1,75						
27	143,6	136,74	90	32	2012	1	1,17	90	32	2012	2	1,98	110	44	2517	4	2,45	
28	148,7	141,78	90	32	2012	1	1,29	90	32	2012	2	2,30						
30	158,8	151,87	90	32	2012	1	1,40	90	32	2012	2	2,63	120	44	2517	4	3,54	
38	199,1	192,23	100	32	2012	1	2,43											
45	236,0	227,58	111	32	2012	1	3,55											
57*	296,6	288,18	111	32	2012	6	4,28											
76*	392,5	384,16	111	32	2012	6	5,95											