

3/4" x 7/16"

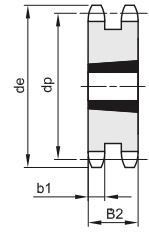
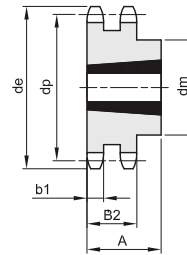
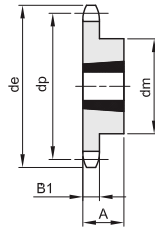
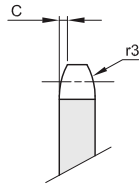
19,05 x 11,68 mm

Rodillo 12,07 mm

12B - 1 - 2 - 3

B1	B2	B3	b1	C	r3
-----------	-----------	-----------	-----------	----------	-----------

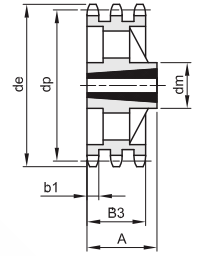
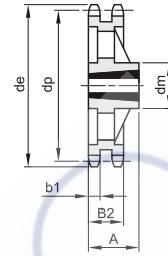
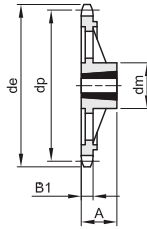
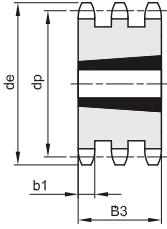
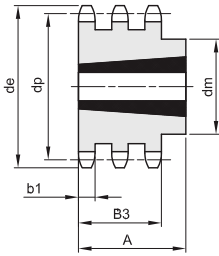
11,1	30,3	49,8	10,8	2	19
------	------	------	------	---	----



1

2

3



4

5

6

7

8

Material acero C45 / *Material hierro fundido EN-GJL-200

Z	de	dp	simple				doble				triple								
			dm	A	Taper	Tipo	Kg.	dm	A	Taper	Tipo	Kg.	dm	A	Taper	Tipo	Kg.		
13	87,8	79,60	60	25	1210	1	0,35												
14	93,8	85,61	67	25	1610	1	0,40												
15	99,8	91,62	70	25	1610	1	0,44	30,3	1610	3	0,68	49,8	1615	5	1,11				
16	105,8	97,65	71	25	1610	1	0,53	30,3	1610	3	0,89								
17	111,9	103,67	76	25	1610	1	0,66	30,3	1610	3	1,14	49,8	1615	5	1,75				
18	117,9	109,71	90	32	2012	1	0,86	90	32	2012	2	1,18							
19	123,9	115,73	90	32	2012	1	0,94	90	32	2012	2	1,24	49,8	2012	5	2,02			
20	130,0	121,78	90	32	2012	1	1,04	108	44	2517	2	1,40							
21	136,0	127,81	102	44	2517	1	1,24	108	44	2517	2	1,68	49,8	2517	5	2,09			
22	142,0	133,86	108	44	2517	1	1,60	108	44	2517	2	1,99							
23	148,1	139,90	108	44	2517	1	1,70	108	44	2517	2	2,24	49,8	2517	5	3,00			
24	154,1	145,94	108	44	2517	1	1,81	108	44	2517	2	2,54							
25	160,2	151,99	108	44	2517	1	1,93	108	44	2517	2	2,87	49,8	2517	5	3,98			
26	166,2	158,04	108	44	2517	1	2,04	108	44	2517	2	3,17							
27	172,3	164,09	108	44	2517	1	2,14	108	44	2517	2	3,55	140	51	3020	4	3,90		
28	178,3	170,13	108	44	2517	1	2,37	108	44	2517	2	4,10							
30	190,4	182,24	108	44	2517	1	2,60	108	44	2517	2	4,62	140	51	3020	4	5,64		
38	238,9	230,69	108	44	2517	1	3,93	140	51	3020	2	8,11	140	51	3020	4	11,58		
45	283,2	273,10	124	44	2517	1	5,52												
57*	355,9	345,81	124	44	2517	6	6,48	160	51	3020	7	10,28	160	51	3020	8	13,23		
76*	471,1	460,99	124	44	2517	6	9,71	160	51	3020	7	15,24							