

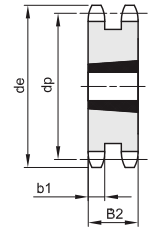
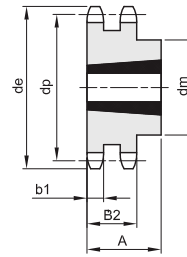
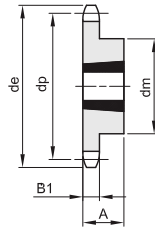
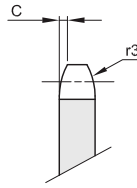
**1"1/4 x 3/4"**

**31,75 x 19,56 mm**

**Rodillo 19,05 mm  
20B - 1**

**B1 B2 B3 b1 C r3**

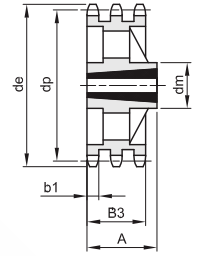
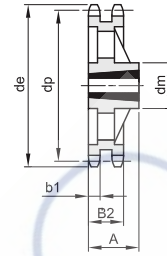
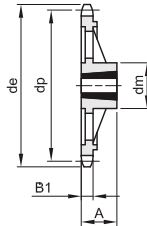
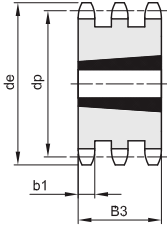
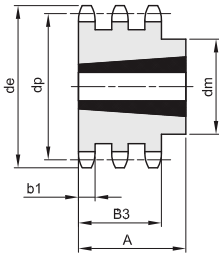
18,5 3,5 32



1

2

3



4

5

6

7

8

Material acero C45 / \*Material hierro fundido EN-GJL-200

Z	de	dp	simple					doble				triple						
			dm	A	Taper	Tipo	Kg.	dm	A	Taper	Tipo	Kg.	dm	A	Taper	Tipo	Kg.	
15	167,7	152,72	110	44	2517	1	3,39											
17	187,7	172,78	110	44	2517	1	5,07											
19	207,9	192,91	110	44	2517	1	6,75											
21	228,0	213,04	120	44	2517	1	7,70											
23	248,2	233,17	120	44	2517	1	8,78											
25	268,4	253,33	120	44	2517	1	9,50											
30	318,7	303,65	160	51	3020	1	11,90											
38*	399,4	384,49	160	51	3020	6	15,80											