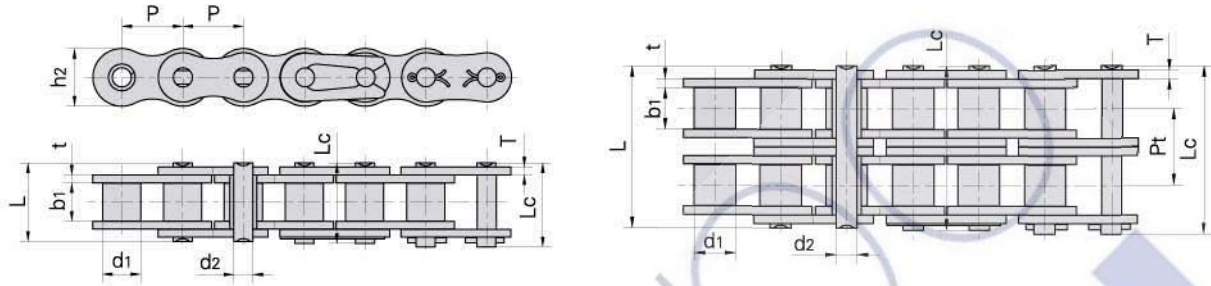


## Other roller chains Otras cadenas de rodillos



Donghua Chain No.	Pitch	Roller diameter	Width between inner plates	Pin diameter	Pin length		Inner plate depth	Plate thickness	Transverse pitch	Ultimate tensile strength	Average tensile strength	Weight per meter
Donghua Cadena No	Paso	Diámetro rodillo	Ancho interior	Diámetro pasador	Longitud pasador		Altura placas	Ancho placas	Paso transversal	Resis. rotura	Resis. media tracción	Peso por metro
	P	d1 max	b1 min	d2 max	L max	Lc max	h2 max	t/T max	Pt	Q min	Q0	q
	mm	mm	mm	mm	mm	mm	mm	mm	mm	kN/LB	kN	kg/m
A06B-2	9.525	6.35	5.72	3.28	23.4	24.40	8.20	1.30	10.24	16.90/3841	18.7	0.75
06BF30-2	9.525	6.35	5.40	3.28	23.7	23.70	9.60	1.60	10.24	16.5/3748	18.15	1.05
415	12.700	7.77	4.76	3.60	11.0	12.40	9.70	1.00	-	6.86/1559	7.6	0.32
415H	12.700	7.77	4.76	3.96	13.1	14.50	12.00	1.50	-	14.40/3273	16.1	0.55
415B	12.700	7.75	4.88	4.09	12.9	14.40	10.30	1.30	-	12.00/2727	14.2	0.45
415BF1	12.700	7.75	4.88	4.09	11.5	13.00	10.30	1.00	-	9.00/2045	10.6	0.38
415BF3	12.700	7.75	4.80	4.09	11.6	13.65	10.30	1.20	-	9.80/2227	10.7	0.43
415BF5	12.700	7.75	5.10	4.09	14.4	16.00	9.90	1.8/1.6	-	16.00/3600	16.5	0.46
415BF7	12.700	7.75	4.88	3.58	13.8	15.00	10.30	1.30	-	6.00/1363	10.7	0.40
423	12.700	8.51	6.40	4.45	15.6	17.10	12.40	1.70	-	19.60/4455	21.9	0.71
478	12.700	7.80	4.80	4.00	11.6	13.65	10.46	1.25	-	9.80/2227	12.8	0.39
170GSX	12.700	7.75	6.45	3.96	14.8	16.40	11.50	1.6/1.4	-	17.15/3860	18.5	0.62
205	12.700	8.51	6.40	4.45	15.2	16.30	11.80	1.6/1.3	-	18.00/4049	19.0	0.85
08BF	12.700	8.51	5.55	4.45	14.6	16.10	11.80	1.60	-	17.80/4045	19.2	0.66
10AF13	15.875	10.16	16.31	5.08	27.6	29.10	15.09	2.03	-	21.8/4952	23.9	1.35
10AF50	15.875	14.20	19.40	5.08	30.9	32.60	13.00	2.03	-	16.4/3726	18.0	2.14
12BF14	19.050	12.07	30.56	5.72	42.0	43.60	16.00	1.85	-	29.00/6591	32.2	2.13
515	19.050	12.07	13.50	5.72	28.6	31.30	16.20	3.00	-	30.0/6748	33.0	1.83
12BF58	19.050	12.70	31.40	5.72	43.5	46.20	16.00	2.03	-	29.00/6591	32.2	2.36
14BF1	22.225	14.30	14.60	9.00	36.3	38.00	23.50	4.8/4.0	-	75.0/16871	82.5	3.59
16BF1	25.400	15.88	12.20	8.28	31.4	32.70	21.00	4.15/3.1	-	60.00/13636	71.4	2.51
16BF2	25.400	15.88	17.02	8.28	38.6	39.80	21.00	4.15	-	60.00/13636	71.4	3.08
16BF5	25.400	15.88	12.70	8.28	30.8	32.10	20.00	3.5/3.0	-	50.00/11364	57.5	2.37
16AF52	25.400	15.88	78.00	7.92	95.6	99.10	24.00	3.25	-	56.7/12882	62.0	6.46
16AF62	25.400	15.88	47.00	7.92	64.3	67.80	24.00	3.25	-	56.7/12882	62.0	4.29
16AF93	25.400	15.88	12.70	7.92	25.0	28.50	20.50	2.03	-	28.0/63616	30.8	1.74
20AFT-2	31.750	19.05	18.90	9.53	76.4	80.50	30.10	4.00	35.76	211.68/48093	232.0	8.09
20AF22	31.750	19.05	18.90	9.53	44.7	44.70	30.00	4.00	-	50/11360	55.0	3.97
20BF14	31.750	19.05	19.56	10.19	45.6	49.30	26.40	5.6/4.5	-	105/23856	115.5	4.57
24BHF5	38.100	25.40	25.40	14.63	64.6	69.10	36.20	9/7.5	-	270/61344	297.0	10.60
28AF1-2	44.450	25.40	25.22	12.70	103.3	112.20	41.00	5.60	48.87	338.1/76816	371.9	15.06
32AF2	50.800	32.00	31.75	17.00	64.8	69.60	48.00	6.40	-	200.00/45454	222.5	11.61
32AT	50.800	28.58	15.88	14.27	36.2	40.80	47.80	3.25	-	111.20/25272	123.6	5.21