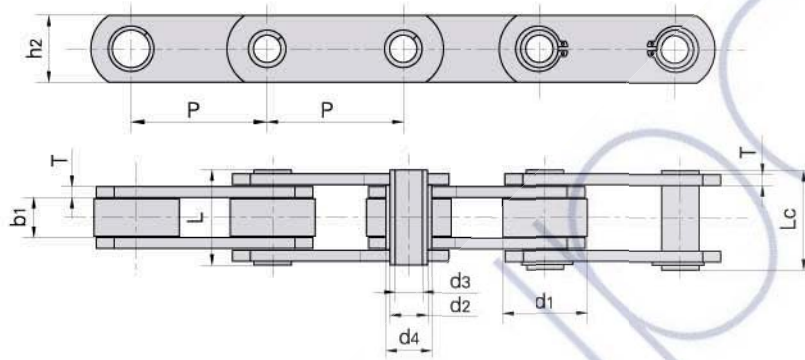
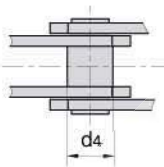


Hollow pin conveyor chains (MC series)

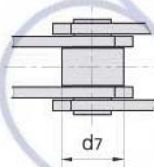
Cadenas transportadoras con pasadores huecos (Serie MC)



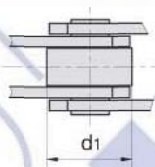
without rollers
sin rodillos



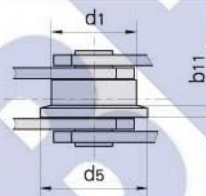
with S small rollers type
tipo S, rodillos
pequeños



with P large rollers type
tipo P, con rodillos
grandes



with F flanged rollers type
tipo F, rodillos con pestaña



DIN Chain No. DIN Cadena No	Pitch Paso					Roller dimension Dimensiones rodillo					Bush diameter Diámetro casquillo	Plate depth Altura placas
	P					d1 max	d7 max	d5 max	b11	d4 max	h2 max	
	mm					mm	mm	mm	mm	mm	mm	
MC28	63.0	80.0	100.0	125.0	160.0	—	36.0	25.0	45.0	4.5	17.5	25.0
MC56	80.0	100.0	125.0	160.0	200.0	250.0	50.0	30.0	60.0	5.0	21.0	35.0
MC112	100.0	125.0	160.0	200.0	250.0	315.0	70.0	42.0	85.0	7.0	29.0	50.0
MC224	160.0	200.0	250.0	315.0	400.0	500.0	100.0	60.0	120.0	10.0	41.0	70.0

DIN Chain No. DIN Cadena No	Width between inner plates Ancho interior	Pin diameter Diámetro rodillo		Pin length Longitud pasador		Plate thickness Ancho placas	Breaking load Carga de rotura	
	b1 min	d2 max	d3 min	L max	Lc max	T max	Q min	*Q min
	mm	mm	mm	mm	mm	mm	kN/LB	kN/LB
MC28	20.0	13.0	8.2	36.0	38.5	3.5	28.0/6364	40.0/9091
MC56	24.0	15.5	10.2	45.0	47.5	4.0	56.0/12727	90.0/20454
MC112	32.0	22.0	14.3	62.5	64.3	6.0	112.0/25454	180.0/40908
MC224	43.0	31.0	20.3	83.0	85.5	8.0	224.0/50909	350.0/79544

*Q: Higher breaking load with hardened plates

*Q: Placas endurecidas, mayor carga de rotura