

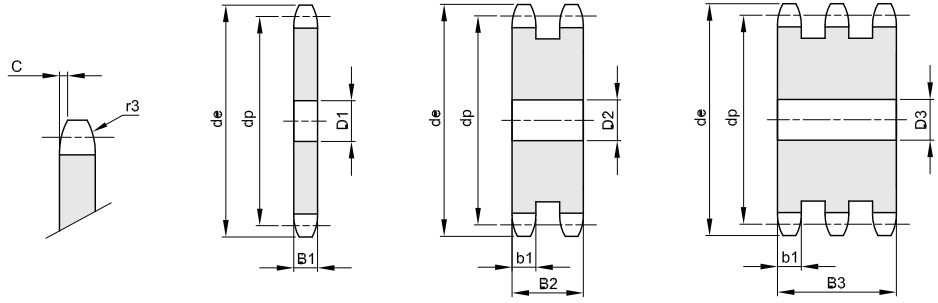
2" x 1"1/4

50,8 x 30,99 mm

Rodillo 29,21 mm
32B - 1 - 2 - 3

B1	B2	B3	b1	C	r3
----	----	----	----	---	----

29,4	87,4	146	28,8	6	51
------	------	-----	------	---	----



Z	de	dp	simple D1 Kg.	doble D2 Kg.	triple D3 Kg.
8	152,0	132,74	25 2,27	25 5,53	25 8,83
9	168,0	148,54	25 2,99	25 7,46	25 11,99
10	184,0	164,39	25 3,81	25 9,68	25 15,63
11	200,0	180,31	30 4,67	35 11,86	35 19,20
12	216,0	196,29	30 5,67	35 14,64	35 23,78
13	235,0	212,29	30 6,77	35 17,70	35 28,83
14	251,0	228,29	30 7,97	35 21,05	35 34,35
15	267,0	244,30	30 9,26	35 24,68	35 40,34
16	283,0	260,40	30 10,64	40 28,38	40 46,47
17	299,0	276,46	30 12,12	40 32,57	40 53,40
18	315,0	292,55	30 13,69	40 37,05	40 60,80
19	331,0	308,66	30 15,36	40 41,80	40 68,68
20	347,0	324,71	40 16,99	40 46,84	40 77,02
21	363,0	340,82	40 18,85	40 52,15	40 85,84
22	379,0	356,98	40 20,80	40 57,75	
23	396,0	373,08	40 22,85	40 63,63	40 104,88
24	412,0	389,18	40 24,99	40 69,80	
25	428,0	405,33	40 27,23	40 76,24	40 125,81
26	444,0	421,44	40 29,56	40 82,97	
28	476,0	453,69	40 34,51	40 97,27	
30	508,0	486,00	40 39,84	40 112,70	40 186,37
32	541,0	518,27	40 45,54		
35	589,0	566,71	40 54,81	40 156,19	40 258,69
38	638,0	615,16	40 64,93	40 185,67	40 307,73
40	670,0	647,47	40 72,16	40 206,73	
45	751,0	728,24	40 91,87	40 265,32	40 438,64
50	832,0	809,04	40 113,96	40 328,95	40 549,27
57	945,0	922,16	40 148,86	40 431,27	40 716,72
60	993,0	970,65	40 165,24		
76	1252,0	1229,27	40 267,00	40 757,78	40 1295,64

Z	de	dp	simple D1 Kg.	doble D2 Kg.	triple D3 Kg.
---	----	----	---------------	--------------	---------------