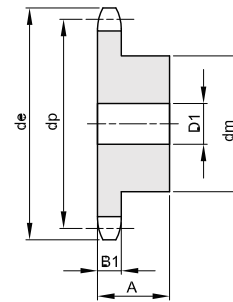
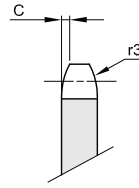


ASA 120

38,1 x 25,4 mm
Rodillo 22,23 mm
24A - 1



B1	B2	B3	b1	C	r3
23,5				4,8	40,5

Material acero C45 / *Material Fe(Hierro) - con cubo soldado

Z	de	dp	simple				doble			triple							
			dm	D1	A	Kg.	dm	D2	A	Kg.	dm	D3	A	Kg.			
8	113,0	99,55															
9	125,0	111,40															
10	137,0	123,29	80	20	45	2,67											
11	149,0	135,21	90	25	50	3,45											
12	161,0	147,22	102	25	50	4,26											
13	173,0	159,18	114	25	50	5,22											
14	185,0	171,22	128	25	50	6,29											
15	197,0	183,26	132	25	50	7,05											
16	209,0	195,30	136	25	55	8,41											
17	221,0	207,34	140	25	55	9,26											
18	233,0	219,42	140	25	55	9,95											
19	245,5	231,49															
20	257,5	243,57	140	25	55	11,56											
21	270,5	255,65															
22	282,5	267,73															
23	294,5	279,80															
24	307,0	291,88															
25	319,0	304,00	150	30	60	17,70											
26	331,0	316,08															
27	343,0	328,19															
28	355,0	340,27															
29	367,5	352,38															
30	379,5	364,50															
31	391,5	376,62															
32	403,5	388,69															
33	415,5	400,81															
34	428,0	412,93															
35	440,0	425,04	*150	30	60	30,01											
36	452,0	437,16															
37	464,0	449,27															
38	476,5	461,39															
39	488,5	473,50															
40	501,5	485,62															